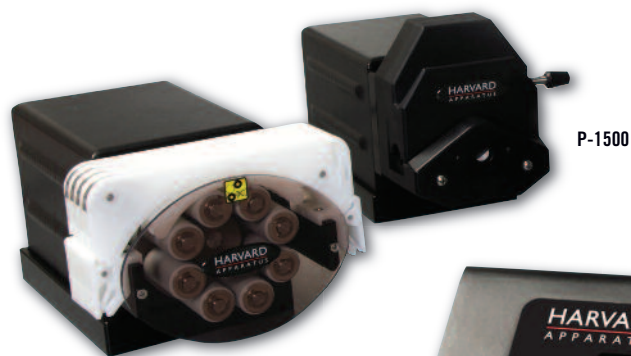


# INTRODUCING THE **NEW** **HARVARD** **PERISTALTIC PUMP**



P-1500



P-70

P-230



Harvard Peristaltic Pump  
Control Box

## UNPARALLELED ACCURACY, REPRODUCIBILITY, AND EASE OF USE OVER A BROAD RANGE OF FLOW RATES

### Key Features

- Single and Multi-Channel options
- LCD color touch screen with intuitive icon interface for unparalleled ease-of-use
- Remote Design ideal for work inside incubators and fume hoods
- Interchangeable Pump Heads
- A library of tubing sizes stored in the pump's memory minimizes set up time
- Custom tubing can be used allowing complete flexibility

### Unparalleled Versatility

- Single Channel or combined channel mode for setting flow rate
- Pump Mode - Runs continuously at a set flow rate
- Timed Dispense - Dispenses for a fixed time at a set flow rate
- Volume Dispense - Dispenses a fixed volume
- Foot Switch Control Option
- Analog Control Option
- Bidirectional Delivery
- Connectivity: USB, RS-485, I/O

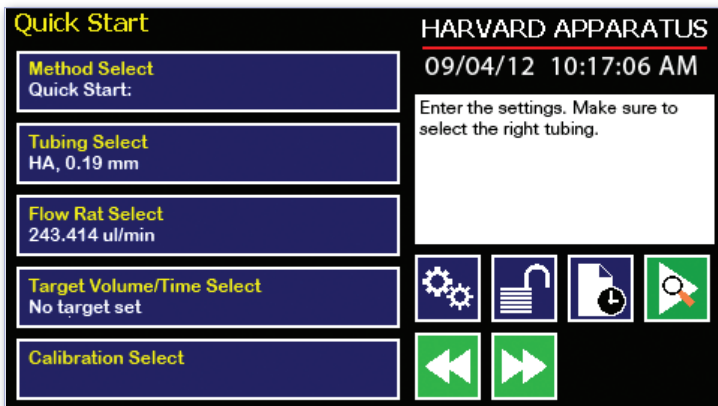
**HARVARD**  

---

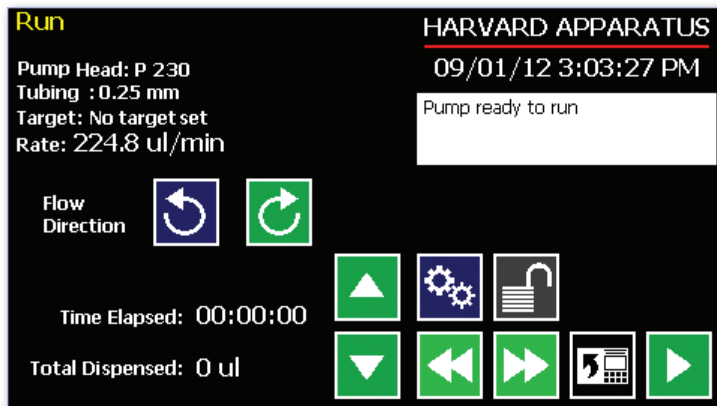
**A P P A R A T U S**

phone 508.893.8999 fax 508.429.5732 toll free 800.272.2775  
e-mail [techsupport@harvardapparatus.com](mailto:techsupport@harvardapparatus.com)

[www.harvardapparatus.com](http://www.harvardapparatus.com)



Quickstart Screen



Run Screen

## Specifications, Control Box and Pump with Motor Drive

| DESCRIPTION             | PUMP WITH P-70 MOTOR DRIVE                 | PUMP WITH P-230 MOTOR DRIVE                | PUMP WITH P-1500 MOTOR DRIVE                |
|-------------------------|--|--|---|
| Type                    | 8 rollers, 5 channels                      | 8 rollers, 4 channels                      | 4 rollers, 1 channel                        |
| Accuracy                | ±1.0%                                      | ±1.0%                                      | ±1.0%                                       |
| TTL Connector           | 15-pin D-sub                               | 15-pin D-sub                               | 15-pin D-sub                                |
| Computer Interface      | USB Type 'B'                               | USB Type 'B'                               | USB Type 'B'                                |
| Pump-to-Pump            | IEEE 1394                                  | IEEE 1394                                  | IEEE 1394                                   |
| Back pressure           | 15 psi                                     | 15 psi                                     | 30 psi                                      |
| Tubing ID               | 0.13 to 2.79 mm (0.005 to 0.11 in)         | 0.13 to 3.17 mm (0.005 to 0.13 in)         | 0.8 to 4.8 mm (0.03 to 0.19 in)             |
| Flow Rate Range         | 0.001 to 70 ml/min                         | 0.001 to 230 ml/min                        | 0.01 to 1,500 ml/min                        |
| Dimensions: Control Box | 20.7 x 13 x 9.6 cm (8.13 x 5.13 x 3.75 in) | 20.7 x 13 x 9.6 cm (8.13 x 5.13 x 3.75 in) | 20.7 x 13 x 9.6 cm (8.13 x 5.13 x 3.75 in)  |
| Dimensions: Pump Head   | 11.5 x 25.4 x 11.8 cm (4.5 x 10 x 4.63 in) | 16 x 23.6 x 11.8 cm (6.3 x 9.3 x 4.63 in)  | 11.5 x 24.1 x 11.8 cm (4.5 x 9.5 x 4.63 in) |
| Weight                  | 4.7 kg (10.5 lbs)                          | 5 kg (11 lbs)                              | 5 kg (11 lbs)                               |
| Pump Voltage            | 30 VDC, 1.67 A                             | 30 VDC, 1.67 A                             | 30 VDC, 1.67 A                              |
| Power Supply            | 100-250 VAC, 50/60 Hz                      | 100-250 VAC, 50/60 Hz                      | 100-250 VAC, 50/60 Hz                       |
| For Compatible Tubing   | Please call for options.                   | Please call for options.                   | Please call for options.                    |
| ORDER #                 | <b>70-7000</b>                             | <b>70-7001</b>                             | <b>70-7002</b>                              |

## Replacement Parts

| ORDER # | PRODUCT                                   |
|---------|---|
| 70-7003 | P-70 Motor Drive, 8 rollers, 5 channel    |
| 70-7004 | P-230 Motor Drive, 8 rollers, 4 channel   |
| 70-7005 | P-1500 Motor Drive, 4 rollers, 1 channel  |
| 70-7006 | Control Box for all P Series Motor Drives |
| 72-0604 | Cartridge/Cassette for P-70               |
| 73-3052 | Cartridge/Cassette for P-230              |